

Stanza Toxicity - Tech notes

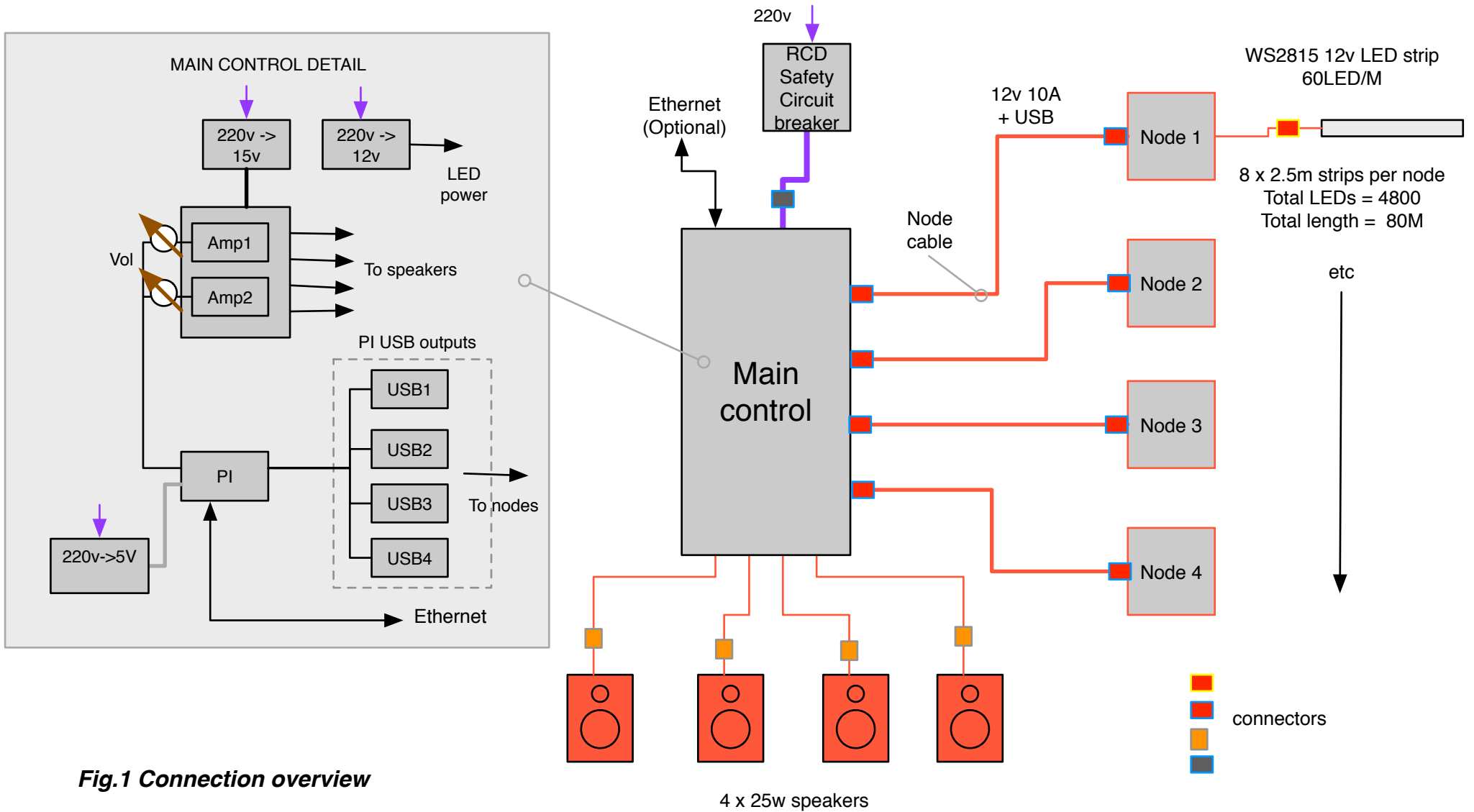


Fig.1 Connection overview

As show above (Fig.1) the setup consists of:

Main control box - at base of tree

Main power cable - connected to main control box

4 nodes - placed in tree

4 node cables - connected to nodes

32 LED strips - placed in tree, connected to nodes

4 speakers - placed in tree

4 speaker cables - connected to speakers

BEFORE SETUP

Check all items are present and there is no physical damage.

Remove packing from main control box.

It might be sensible to setup and test the system indoors before wiring to tree.

POWER

The system will run easily from a standard 220-230v power socket.

For extra safety the main power cable has an in-line RCD breaker.

When the cable is plugged into the 220v supply you must press 'reset' on the RCD to enable it.

The LEDs run from 12v, and the audio runs from 15v.

There is NO high voltage going out to the tree. The metal case of the control box is earthed, and can be PAT tested if required.

(Do NOT perform flashover test as this is only for electric heaters etc)

The metal control box can feel warm when running - this is normal)

Connecting up the system

Nodes

All cables are numbered. Connect each cable to the corresponding connector with the same number.
All connectors are polarised - they cannot be incorrectly connected.

Make sure the plugs go in straight. Tighten the locking ring, The connectors are designed to be waterproof with just finger tightness. DO NOT over tighten. Make sure the locking ring is not cross-threaded.

Node cables to main control box:
2 X 5M Node 1 and 2
2 x 7M Node 3 and 4

Speakers

There are 4 speakers which can be hung on the tree with the built-in bracket. You can attach the steel cable provided for extra safety. This loops through the Eyelet on the side of the speaker. See “Securing speaker” picture below.

Speaker cables:
4 x 8M

LEDs

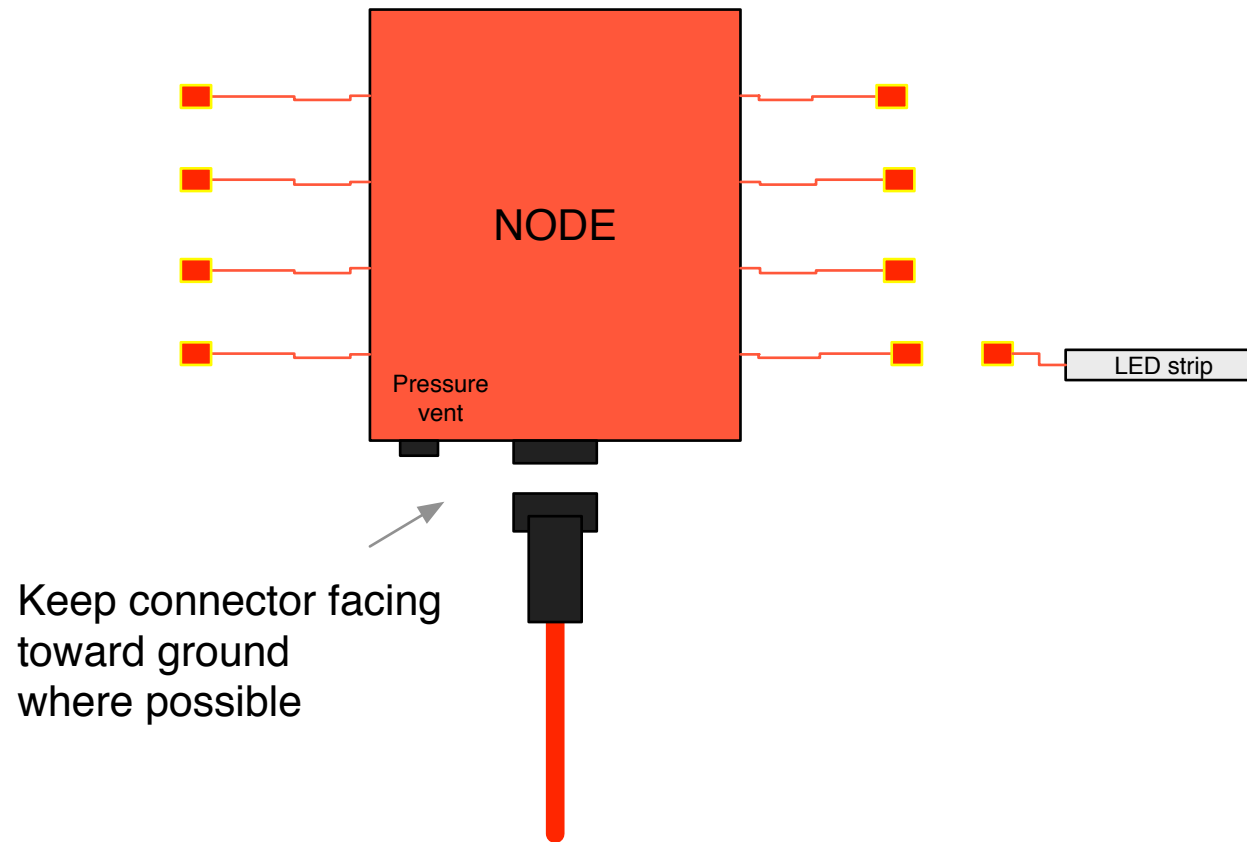
These SuperSeal connectors push-click together. Make sure the connector is straight and it will click into place. It is quite tight - that is ok.
The connector is waterproof, the red covering is for appearance only.

LED cable lengths to node:
8 x 30cm
8 x 60cm
8 x 100cm
8 x 150cm

POWER ON

When everything is connected and checked turn on the power switch on the front of the control box. The system will take about 20 secs to come on and run the LEDs , sound etc.

Fig.2 Node



Control box and cover



Can be secured with wire rope through these eyes

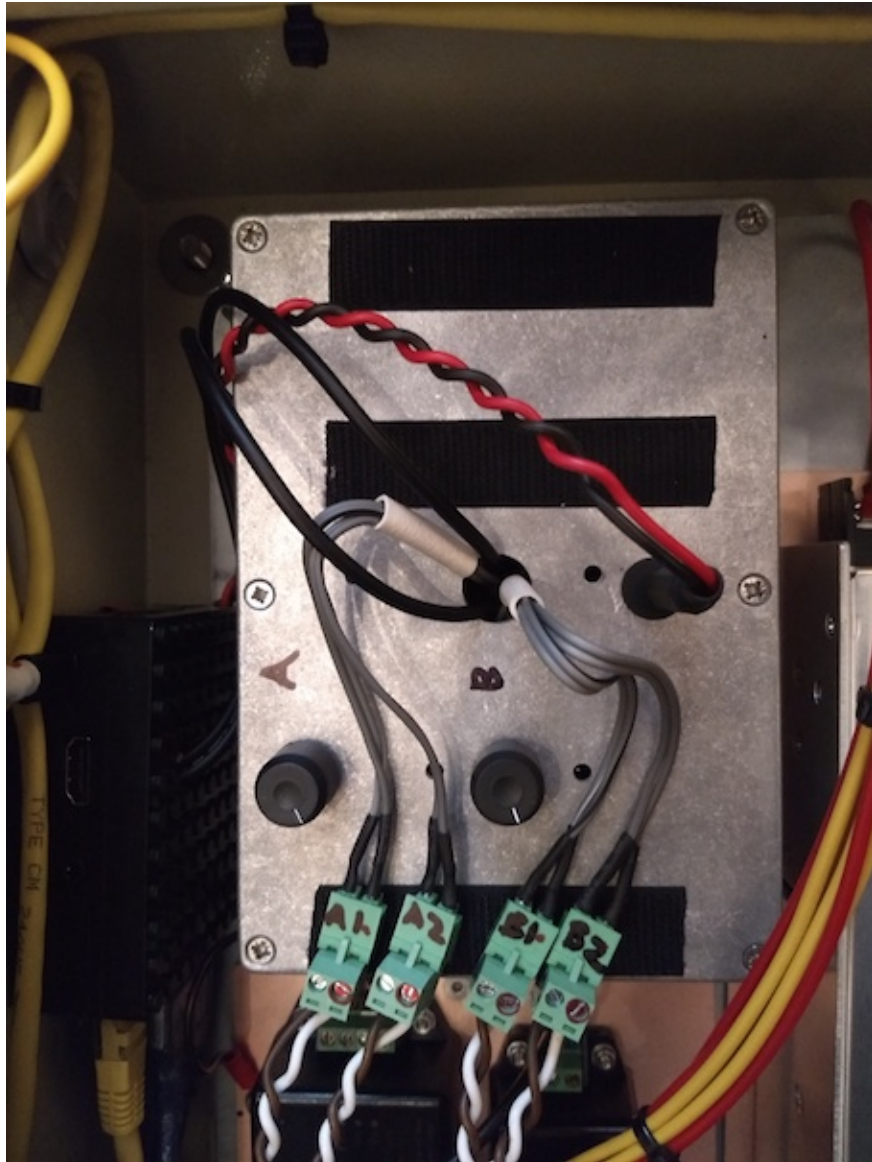
Control box with cover in place



Connector for LEDs

Click together connector as shown below





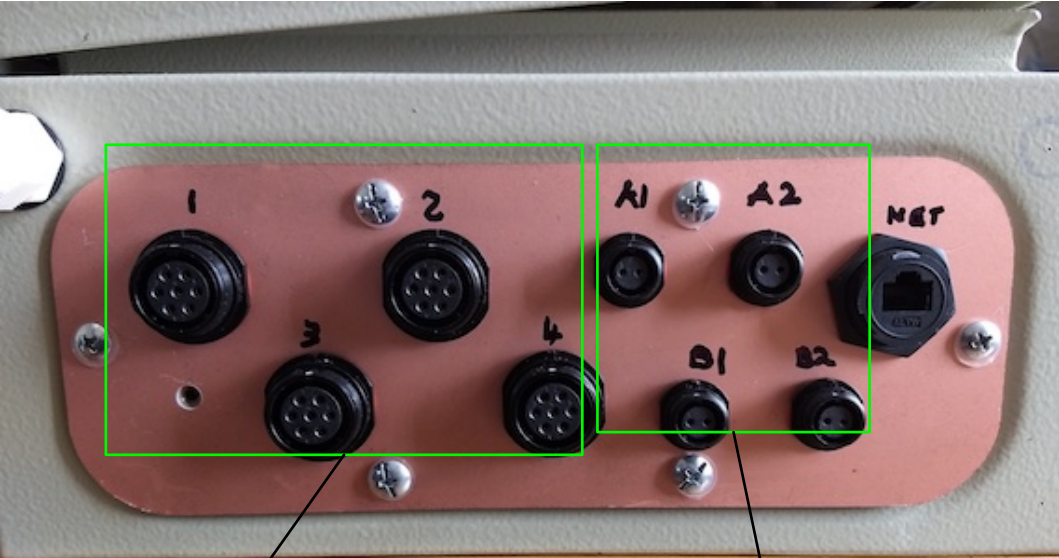
Adjusting sound levels

The amplifier is at the top left of the control box.
There are 2 volume controls, A and B,

A adjusts speaker pair A and B adjusts speaker pair B

All speakers play the same sound

Control box bottom



Nodes

Speakers

**Line up white dot when
Plugging in. Make sure
connector is straight**





Control box connected

Securing speaker



The speakers have their own brackets but a steel wire loop is provided for extra safety. Connect as show here

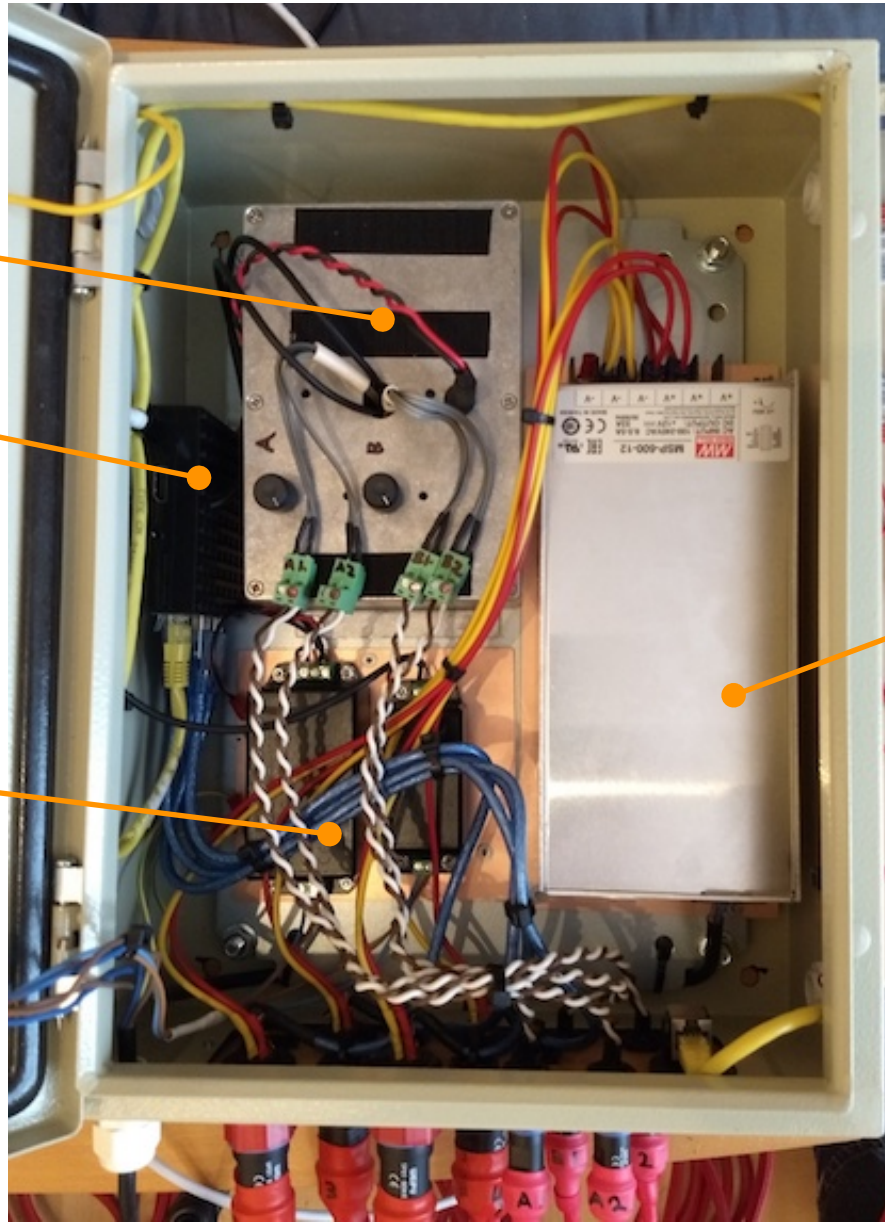
Control box - internal

Audio amps

PI controller

5v and 15v PSUs

Main 12v LED PSU



TROUBLE SHOOTING

No Power

Make sure RCD is powered and you have pressed reset. See RCD info below.

No Sound

Check amplifier volume setting.

No LEDS

PI computer not running, no mains power, main PSU fault.

One node not working

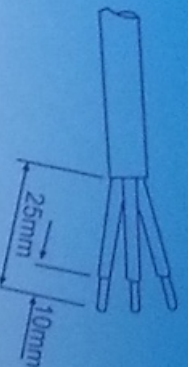
Check node cable is connected correctly. Check USB connections
In bottom of PI computer.

LED strip jittering

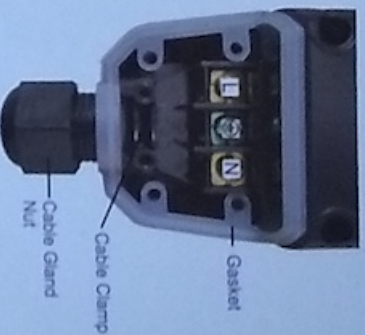
Check LED connection cable

WIRING INFORMATION

The terminal connections on both the IN-LINE input and the LOAD output are wired in the same way



IN-LINE and LOAD TERMINAL CONNECTIONS



Connect
Brown -L Live terminal
Green-yellow-⊕ Earth terminal
Blue -N Neutral terminal

Figure 1

1. Cables. Maximum conductor size $3 \times 1.5\text{mm}^2$, Min conductor size $3 \times 0.75\text{mm}^2$. Max external cable diameter 10mm.
2. IN-LINE input connects to the mains outlet. LOAD output connects to the equipment.
3. Unscrew the four screws on each terminal cover. Unscrew the cable clamp.
4. Strip the cables as indicated in figure 1.
5. Insert through the cable gland nuts.
6. Connect the wires to the terminal blocks observing the polarities in figure1.
7. Refit and tighten the cable clamps.
8. Refit the terminal covers ensuring that the gaskets are in place. Tighten the four screw.
8. Tighten the nuts on the cable glands.

Technical Data

Rated Voltage:	250V-50Hz
Rated current:	13A
Trip leakage current:	30mA
Trip time:	<40ms
Maximum output:	3250W
Temperature:	-25°C to +40°C
Protection Class:	IP66
Conforms to:	BS7071:1992 BS1363.



RECYCLING INFORMATION

When this product has reached the end of its life it must be treated as Waste Electrical & Electronic Equipment (WEEE). Any WEEE marked products must not be mixed with general household waste, but sent separately for the treatment, recovery and recycling of the materials used. Contact your local authority for details of recycling schemes in your area.

MADE IN CHINA
Post Code: PR2 5PP